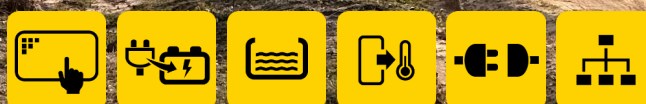


MODULAR

Power System

SARGENT
wired for innovation



Water Sensors



Compact
Flexible
Powerful



MODULAR
BY DESIGN

*Intuitive touchscreen control with
modular plug & play accessories*



Modular System

The main building blocks of the power system

Touchscreen Displays



EC940 4" Control Panel

The EC940 control panel provides intuitive touchscreen controls for monitoring and control of lighting, power, water and environment sensors. It can also control optional accessories such as lithium batteries, solar regulator and ultrasonic water sensors.



4 Inch
Touchscreen



Integrated
Clock



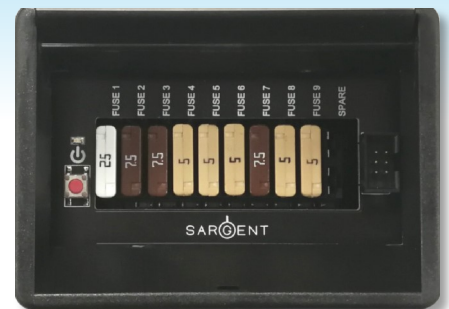
Built-In
Help

Control Unit



MC100 Modular Control Unit

The MC100 is the hub of the system, providing power, switching and monitoring for 12 volt equipment such as heating, lighting and water systems. It also provides protective fusing for all 12 volt circuits, including blown fuse indicators.



Intelligent
Control



12V
Protection



Plug & Play



Fuse Blown
Indicators

For further information and ordering, scan the QR code



4" System



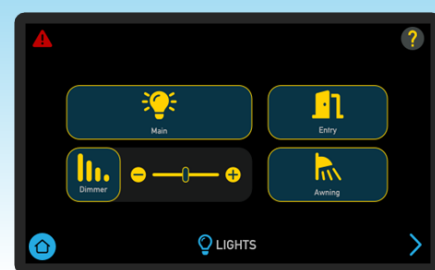
7" System

PLUG & PLAY COLOUR TOUCHSCREEN Solar
CHARGER LCD CANBUS COMMUNICATION
Water Level Temperature Sensor Humidity LITHIUM BATTERY



EC970 7" Control Panel

The EC970 has all features of the EC940 but in a larger format screen for displaying more information. It is also compatible with additional accessories such as AC-DC & DC-DC chargers and Webasto heating systems.



7 Inch Touchscreen

Integrated Clock

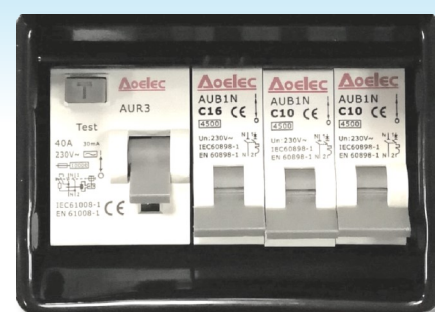
Built-In Help

Mains Protection



MC200 Modular Consumer Unit

The MC200 provides an RCD for earth leakage protection and MCBs for overcurrent protection of the mains supply. The unit also provides switching for the water heater and battery charger along with a reverse polarity indicator.



230V Protection



Plug & Play

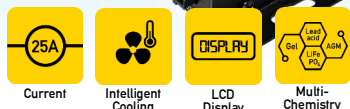


Accessories

Additional parts for upgrading the system

Mains Charger

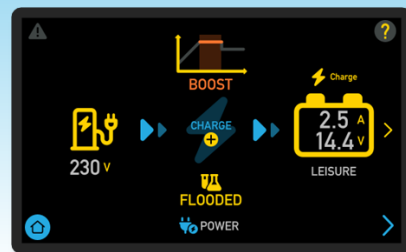
CHARGE +



PX310-KIT 20A 3-Stage Charger *** PXC360-KIT 25A 3-Stage Charger c/w CANBus**

Provides multi-stage charging for most battery types including lithium. The integrated LCD display shows battery charging status. The PSU mode allows the charger to be used without a battery fitted. A silent mode allows the cooling fan to be disabled during night charging. The PXC360 model also allows display of data on the EC970 screen.

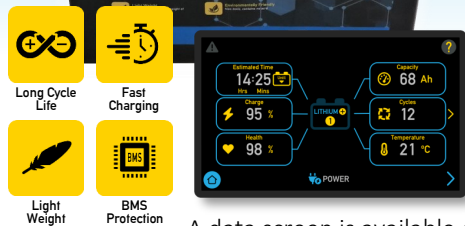
* - Available Q4/25



A data screen is available on EC970 displays only

Lithium Deep Cycle Battery

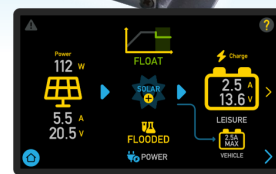
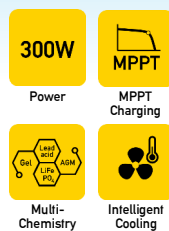
LITHIUM +



A data screen is available on EC940 & EC970 displays

LB70C 70Ah Battery **LB100C 100Ah Battery**

Our lithium batteries provide significant advantages over lead acid including reduced weight, longer life, a more useable capacity and faster charging. All data can be displayed on the control panel, allowing efficient power management.

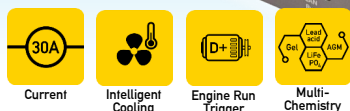


A data screen is available on EC940 & EC970 displays

All accessory information can be displayed on the control panel screen

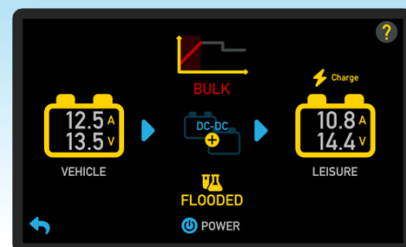
DC-DC Charger

DC-DC +



DXC30-KIT 30A 3-Stage DC-DC Charger

Provides up to 30amp multi-stage charging to the leisure battery during driving, ensuring the battery is more fully charged than using a traditional relay system. Compatible with smart alternators and most battery types including lithium.



A data screen is available on EC970 displays only

SOLAR +

Ultrasonic Water Sensor

SONIC +

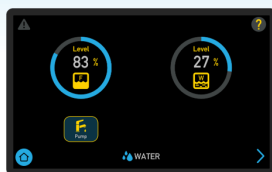
SXC300-KIT2 300W 3-Stage Solar Charger

This solar charger uses MPPT technology to extract up to 30% more energy from a solar panel than standard regulators. A second channel is able to trickle charge the vehicle battery to avoid starting problems.



WLSUF Fresh Sensor WLSUW Waste Sensor

These sensors allow monitoring of fluid levels in fresh or waste water tanks. Contactless measurement improves accuracy and reduces the need for sensor cleaning. The units can easily be calibrated to suit different depths of tank.



A data screen is available on EC940 & EC970 displays







Cables & Connectors

All parts required to get connected

CAN Bus Cables

Various cables are available for connecting the CAN Bus communication from each accessory back to the Modular Control Unit. Select the required type and length from the following table.

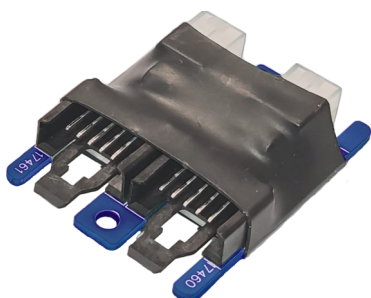
Cable Type		Length (metres)	Part No	
Lumberg > Lumberg		TYPE 1	2	50100-24B
			4	50100-24D
			6	50100-24F
Lumberg > Mini-fit		TYPE 2	2	50101-24B
			4	50101-24D
			6	50101-24F
Mini-fit > Mini-fit		TYPE 3	2	50102-24B
			4	50102-24D
			6	50102-24F
Mini-fit > JST		TYPE 4	2	50103-24B
			4	50103-24D
			6	50103-24F

CAN Bus communication allows the system to be easily expanded

CAN Bus Expanders

To provide more CAN Bus connection points, expander PCB's are available

17461 2-Way CAN Expander

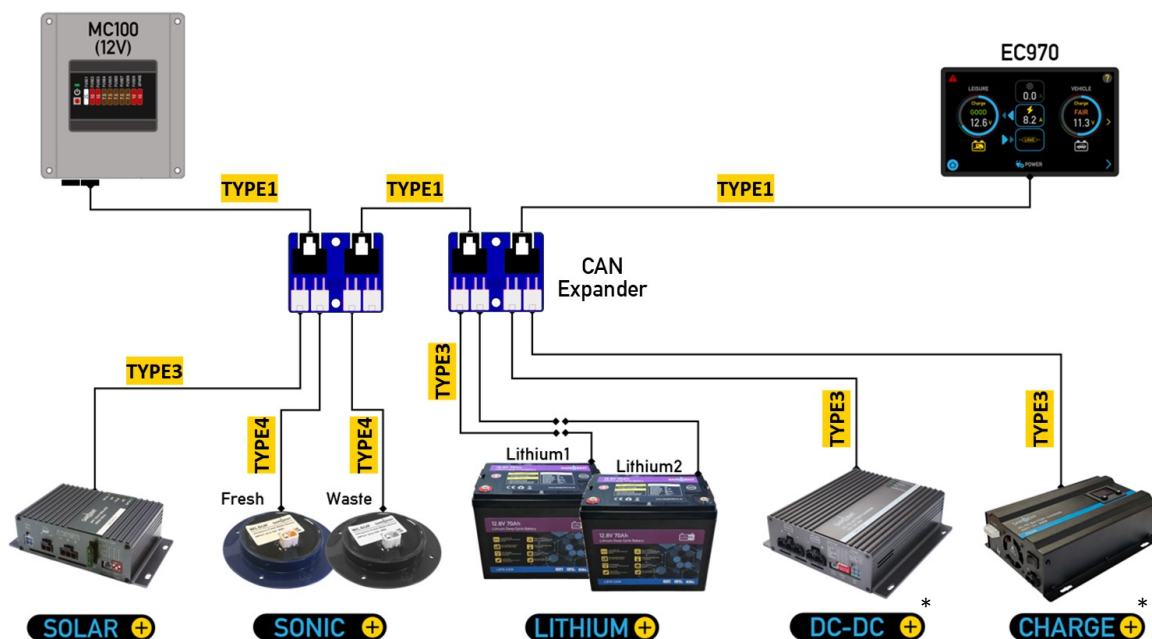


17830 4-Way CAN Expander



Example Installation

Example modular system showing how accessories can be connected using CAN expander and cables



*Data screens for DC-DC+ and CHARGE+ are only available on the EC970 displays





Sargent Electrical Services Limited,
Unit 39, Tokenspire Business Park,
Beverley, HU17 0TB, United Kingdom
Phone: +44 (0)1482 881655 Fax: +44 (0)1482 678987
Tech Support: +44(0)1482 678981
Email: support@sargentltd.co.uk
Web: www.sargentltd.co.uk